

# VertaSec

## Motorized Security Revolving Door

VertaSec is a premium security product in the Gunnebo range of Entrance Control solutions. It offers an elegant design able to maintain the visibility of the existing finished floor, while also offering a choice of security levels to prevent tailgating and piggybacking.

VertaSec offers simultaneous authorized entry\exit and both directions are electronically controllable. On receiving a signal from the access control system or pushbutton, the door wings rotate to allow authorized and monitored passage.

VertaSec also prevents unauthorized passage from the opposite direction while a valid passage is being made in the other direction. This is achieved via sensors located in the

ceiling that continuously monitor all sectors of the door. Safety is provided by adjustable torque sensing and safety edges in both the entry and exit directions. An emergency break-out feature is available as a standard option.

Day-mode functionality is included as standard to provide free passage at set times of day, and added security when needed. All parameters and functionalities are programmable via a user-friendly tablet interface.

VertaSec offers a variety of accessories and options, including manual or motorized night shutters and a wide selection of finishes and door dimensions.

# VertaSec

## Motorized Security Revolving Door

### TECHNICAL SPECIFICATIONS

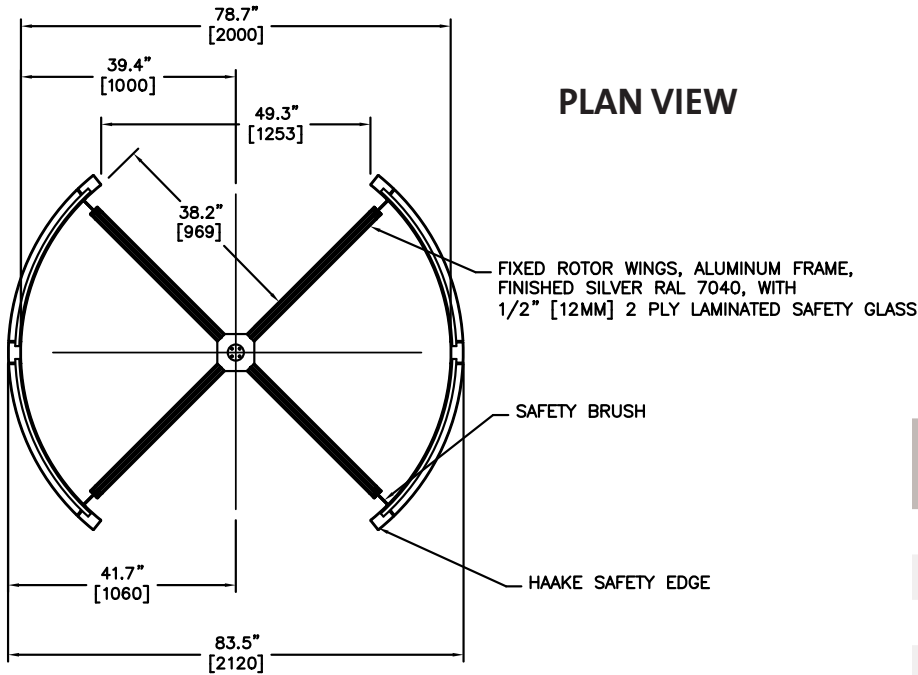
<b>Models</b>	63.0" (1600 mm) Internal Diameter, 67.7" External Diameter 3 Wing 70.9" (1800 mm) Internal Diameter, 75.6" External Diameter 3 Wing 70.9" (1800 mm) Internal Diameter, 75.6" External Diameter 4 Wing 78.9" (2000 mm) Internal Diameter, 83.5" External Diameter 3 Wing 78.9" (2000 mm) Internal Diameter, 83.5" External Diameter 4 Wing	
<b>Materials</b>	<b>Frame and Cornice</b>	Painted steel section powder-coated finish, RAL color 9006
	<b>Frame Glazing</b>	½" 2 ply laminated safety glass P4A BR1/S (in accordance with EN356-EN1063)
	<b>Rotor Wings</b>	Aluminum frame, finish silver RAL 7040, ½" 2 ply laminated safety glass P4A BR1/S (in accordance with EN356-EN1063)
	<b>Ceiling</b>	Laminated HPL finished pearl grey
<b>Drive</b>	Motorized security revolving door. Safety torque sensing.	
<b>Additional Interface</b>	Momentary zero volt (0V) Normally Open (NO) signal is provided by either a card reader or pushbutton input of duration between 0.5 and 1.0 seconds. The card reader inhibits, resets, and passage confirmation as standard.	
<b>IP Rating</b>	IP 33	
<b>Operating Temperature</b>	32°F – 122°F	
<b>Anti-Piggybacking Detection (APB)</b>	Based on a combined proprietary technology with ultrasound and infrared sensors, thermally calibrated to avoid false alarms due to environmental temperature variations into the unit, and designed to detect the event of two or more people through the unit in the same sector.	
<b>Fire Alarm</b>	The wings will rotate by the inbuilt battery back up (BBU) to the safe position in order to allow exit from each sector and then will stop and become inactive. The door will remain in this position until power is restored. A Normally Closed (NC) signal is required from others to effect this state.	
<b>Logic Voltage</b>	24V DC	
<b>Power Supply</b>	115VAC 60Hz	
<b>Power Rating</b>	Stand By	230V AC - 1.4A
	In Operation	115V AC - 2.8A
<b>Walkway Down Lights</b>	Low voltage LED down lights are positioned within the ceiling over each sector.	
<b>Flow Rates/Throughput</b>	<i>Please note these figures are approximate and must be confirmed with Gunnebo Entrance Control Inc.</i> Proximity Reader 48 passages per minute (simultaneously in both directions)	

# VertaSec

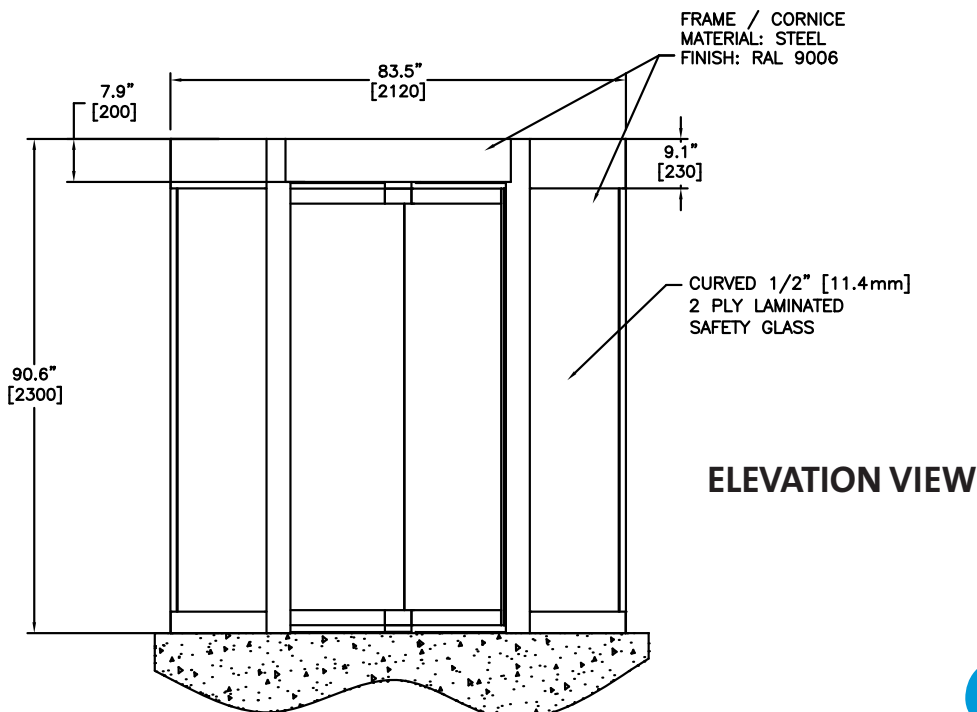
## Motorized Security Revolving Door

### STANDARD DIMENSIONS: VERTASEC 78.9" (2000 mm) 4 WING UNIT

Shown here is the 78.9" (2000 mm) 4 Wing unit. Dimensions will vary per site requirements. For installation details, please refer to the installation manual.



VertaSec Models		
Internal Dia.	External Dia.	Wings
63.0"	67.7"	3
70.9"	75.6"	3
70.9"	75.6"	4
78.9"	83.5"	3
78.9"	83.5"	4



# VertaSec

## Motorized Security Revolving Door

### ADDITIONAL INFORMATION & CONTACT

#### Options

- Alternative finishes and materials
- Breakout wings
- External night shutters
- ½" (11 mm) 3 ply anti-bandit glass
- Floor carpet (gray)
- Anti-piggyback system (APB)
- Anti-panic pushbutton
- Card reader integration
- Pushbutton control
- Status light pictograms

#### Important Information

- Any horizontal pipe or conduit running below the VertaSec must be at least 5.5" (140 mm) below the FFL.
- Metal conduit for cables should be raised at least 2.0" (50mm) from foundation.
- It is the customer's responsibility to ensure the structural integrity and strength of the installation location.
- The dimensions given in this product datasheet are for information only. In order to prepare the installation site, please refer to your usual Gunnebo Customer Service contact.

*For further information, please contact:*

Gunnebo Entrance Control Inc.  
535 Getty Ct., Benicia, CA 94510  
Tel: 513-666-4821  
Email: info@gunnebo.us

*Gunnebo Entrance Control, Inc. is a company within the Gunnebo Group:*

Gunnebo AB  
Box 5181 SE-402 26 Goteborg, Sweden  
Tel: +46 31 83 68 00  
Fax: + 46 31 83 68 10  
www.gunnebo.com

Note: In pursuit of its policy of continuous refinement and improvement, Gunnebo Entrance Control reserves the right to modify design and details at any time and without notice.

